

# Stamps of Antarctica

Bob Thompson

[thompsonro@ecu.edu](mailto:thompsonro@ecu.edu)

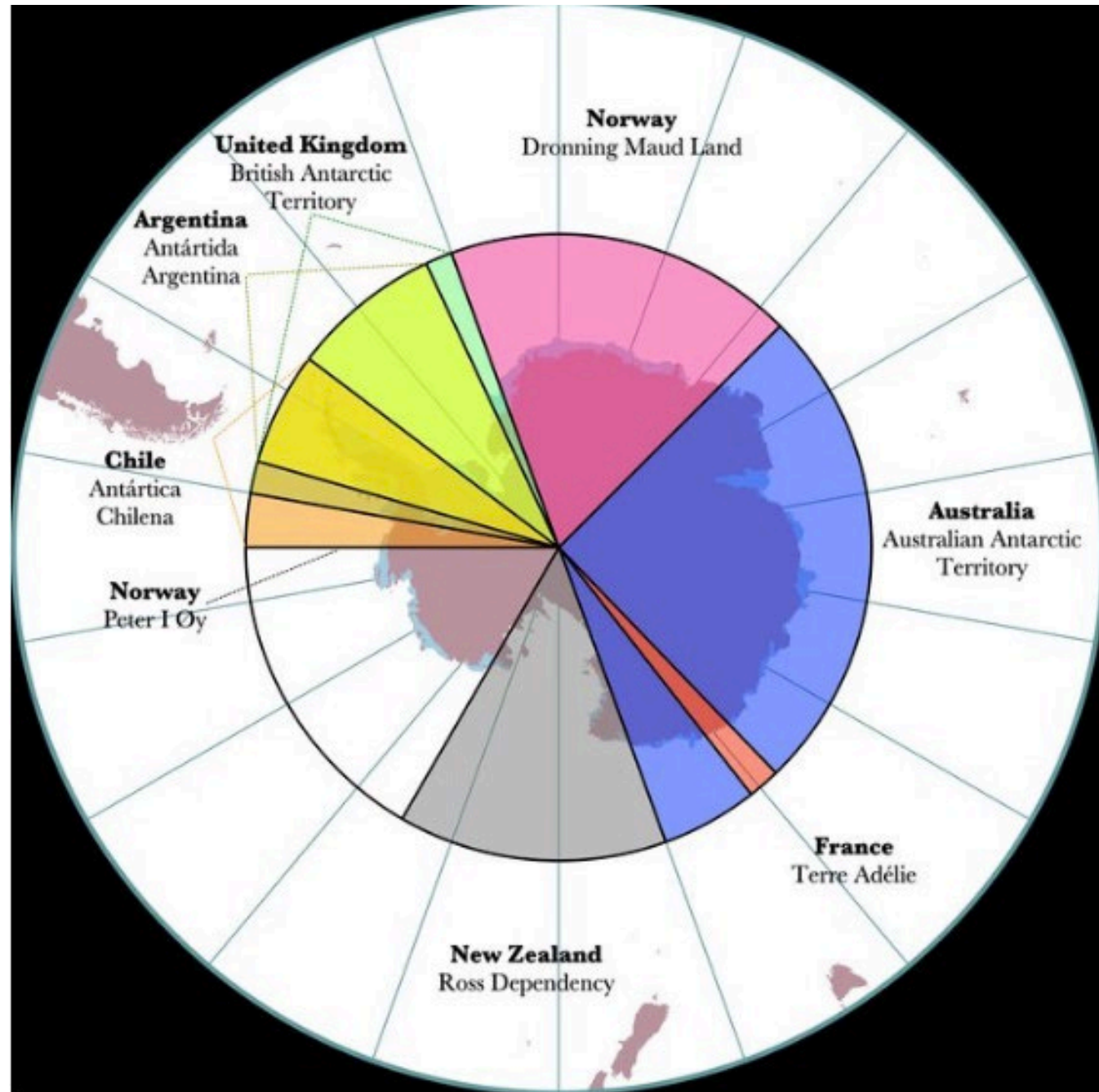


# The Why of It

- The people who live there are mostly scientists and technicians who rotate out. Even those who stay over during the winter are rotated out come spring - for their mental health.
- **Revenue generation** for philatelic services and to support research.
- **Postal service** for researchers - The US, UK, Russia, and China presently operate post offices at one or more of their permanent Antarctic bases and post offices operate during the summer at the French & Chilean stations.
- **Low-cost reinforcement of political and territorial claims.** Witness the Falklands Islands War.

# Antarctic Treaty System

- Main treaty went into force in 1964
- Currently has 54 signatories
- Sets Antarctica aside as a scientific preserve & bans military activity
- Currently 26 permanent research stations
- Not a renunciation of territorial claims
- Some 200 other recommendations have subsequently been adopted.





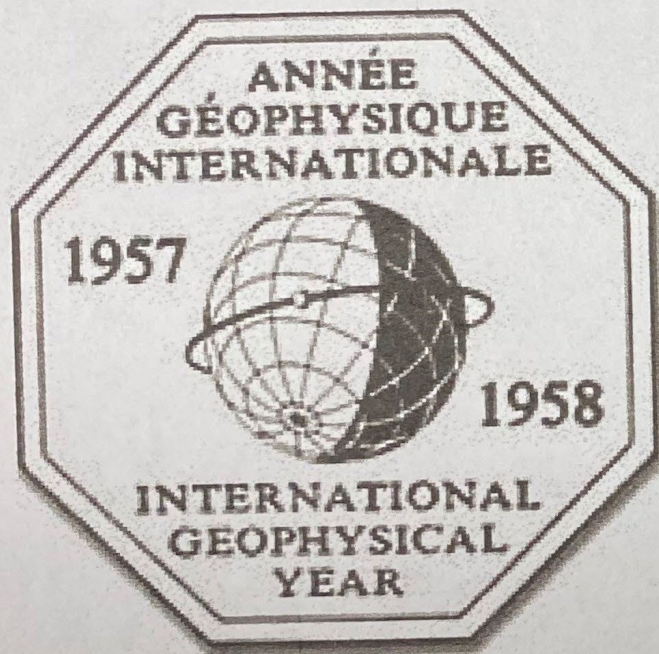
# Stamps featuring Antarctica

- Many countries have issues stamps featuring Antarctica.
  - Argentina, Australia, Belgium, Chile, China, Czechoslovakia, Ecuador, Great Britain, Hungary, Japan, New Zealand, Norway, Poland, the United States, and the USSR among others.
- The issues tend to focus on either territorial claims or honoring explorers, researchers, or wildlife.





International  
Geophysical Year

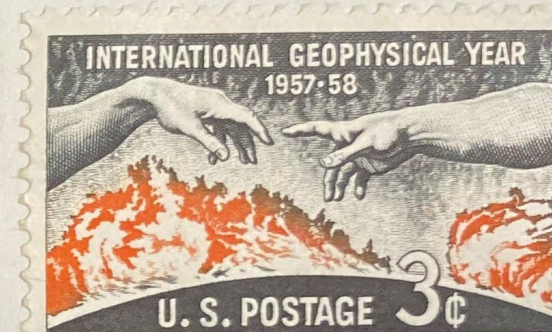


FIRST DAY OF ISSUE



RYN SHYN JR  
LATER LANE  
RLES, LOUISIANA

2/2



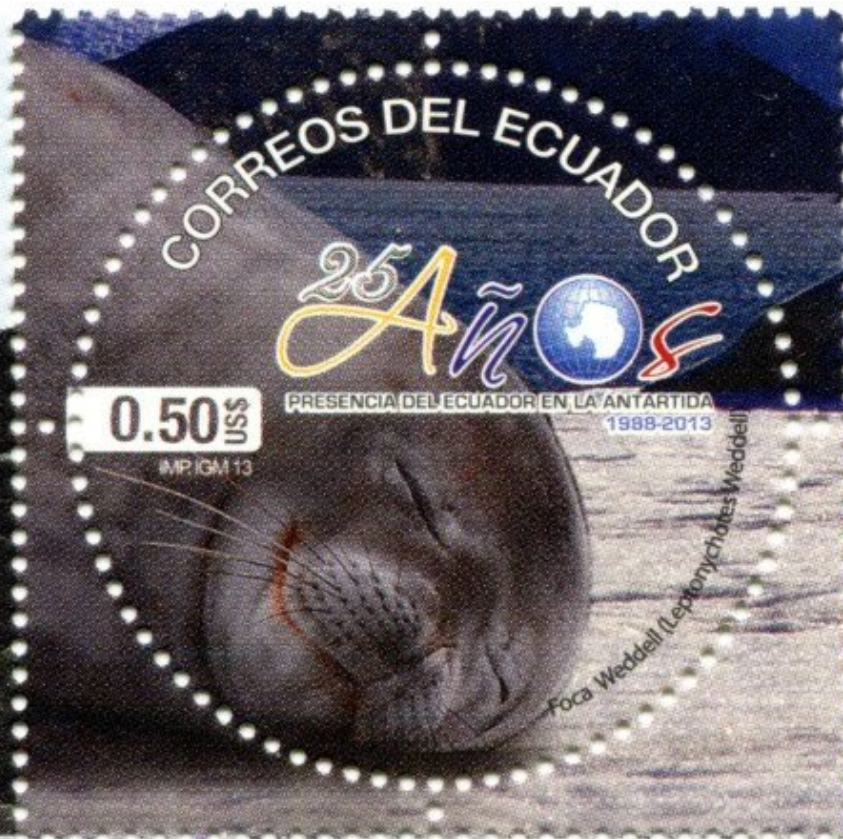
FIRST DAY OF ISSUE





SAM HINERFELD  
 1627 Redwood Drive  
 Louisville, KY 40213  
 U. S. A.







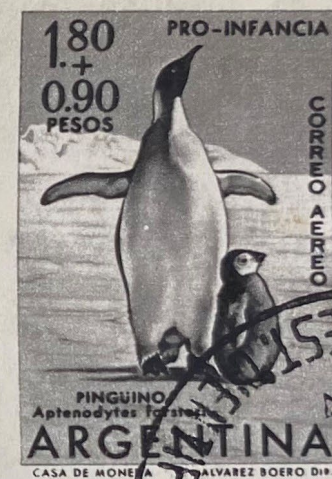
## Examples of Territorial Claims



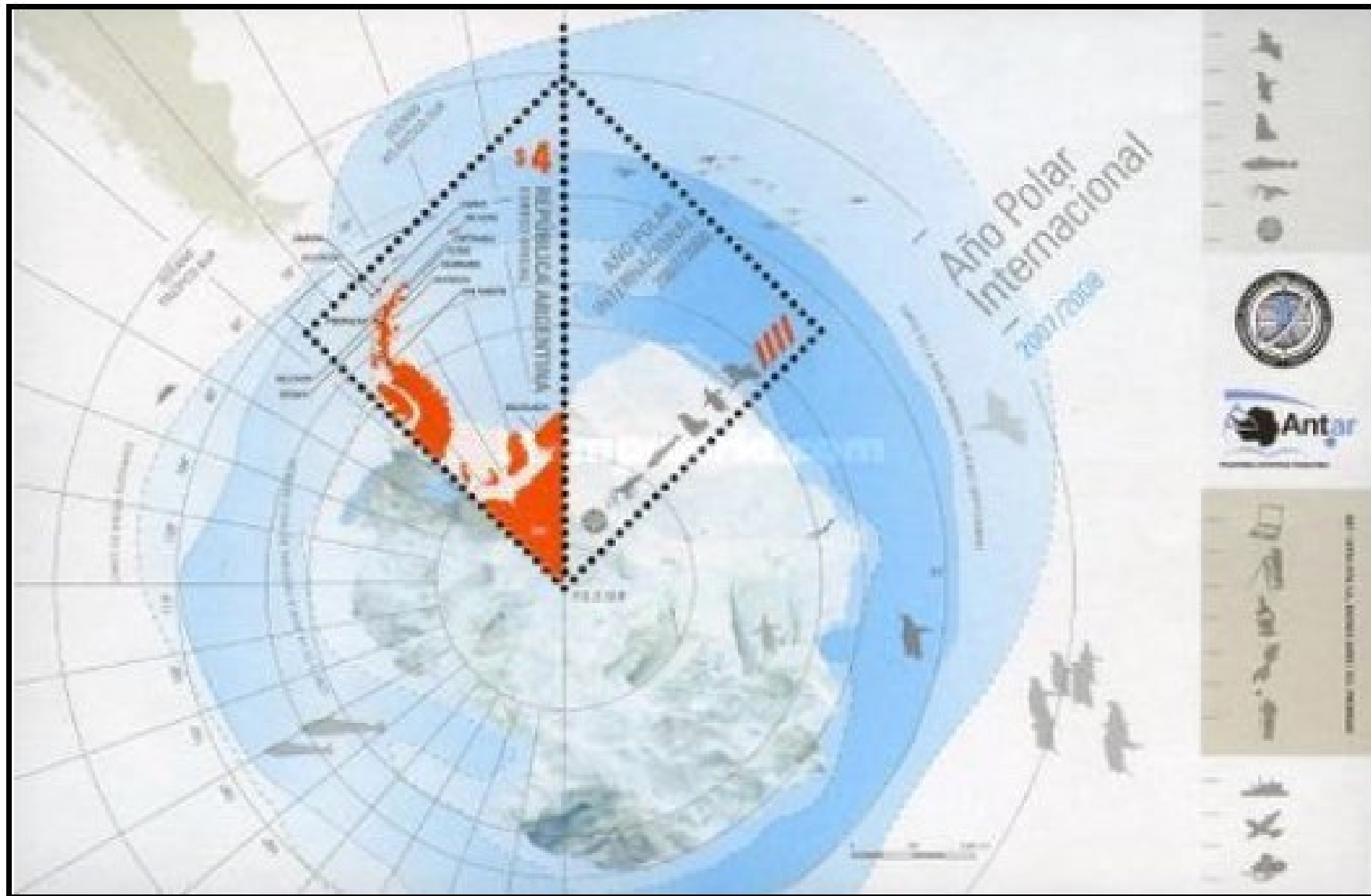




ESTACION CIENTIFICA  
ALMIRANTE BROWN

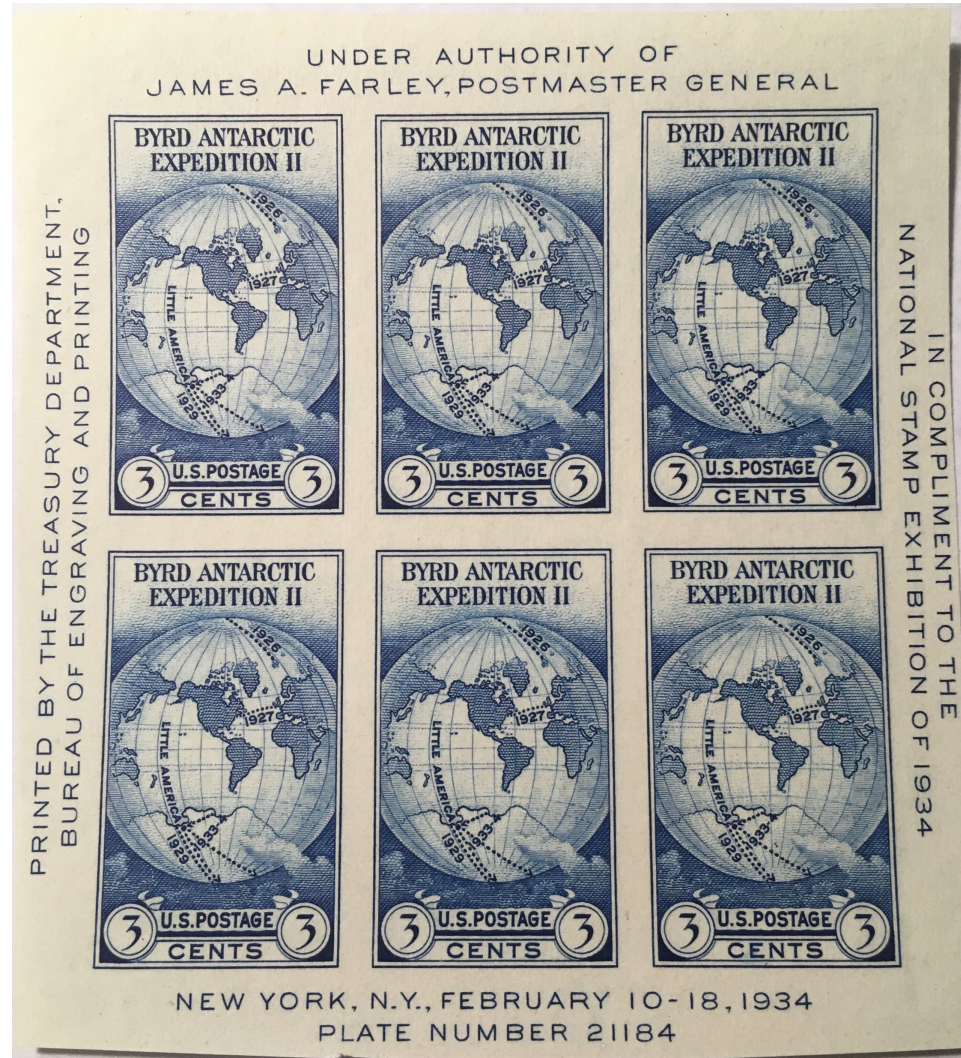




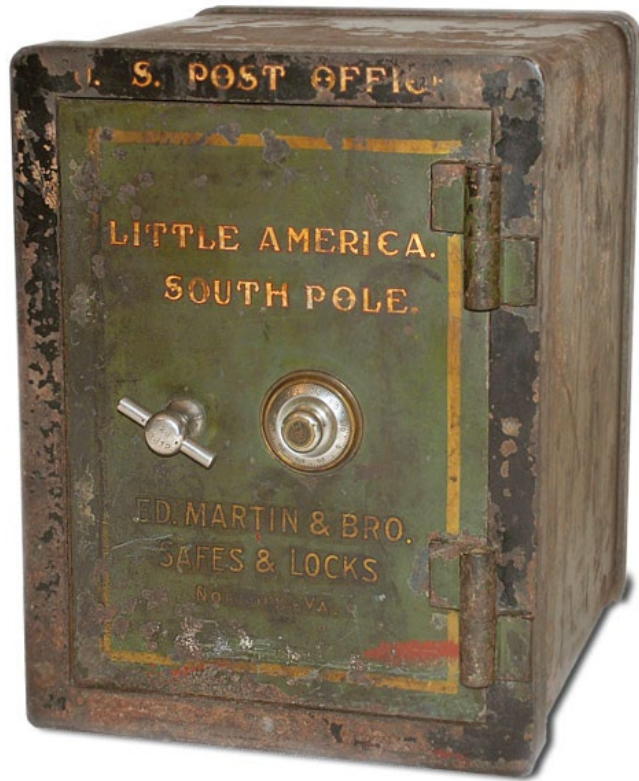


Argentinian 2007/08

**Most famous  
US example  
– Second  
Byrd  
Expedition**



# Antarctic Post Office



National Postal Museum

<https://postalmuseum.si.edu/collections/object-spotlight/antarctic-post-office>





- Good example of the recognition of the philatelic and public relations value of having postal connection to an expedition. Approximately 150,000 items cancelled during two years of operation.



# Antarctic Treaty Issue



The Antarctic Treaty stamp was issued on June 23, 1971. Stamp designed by Howard Koslow. It commemorates the ten-year anniversary of the Antarctic Treaty.





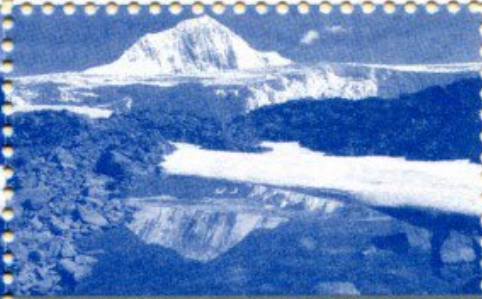
PALMER STATION  
ANTARCTICA



PALMER STATION  
ANTARCTICA



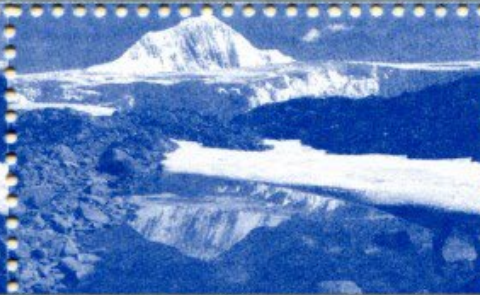
PALMER STATION  
ANTARCTICA



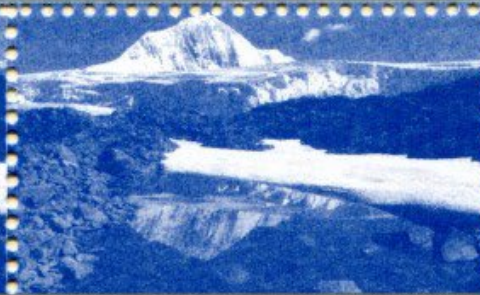
PALMER STATION  
ANTARCTICA



PALMER STATION  
ANTARCTICA



PALMER STATION  
ANTARCTICA



PALMER STATION  
ANTARCTICA



PALMER STATION  
ANTARCTICA

# Stamps from Antarctica

- The stamps that come from the Antarctic region itself are issued by countries which maintain research stations there – and claim ownership of parts of Antarctica or “nearby” islands.
- These include:
  - the British Antarctic Territory,
  - the Australian Antarctic Territory,
  - the French Southern and Antarctic Lands (Terre australes et antarctiques francaises), and
  - the Ross Dependency (New Zealand).
- Not all territorial claimants issue stamps.



# French Southern and Antarctic Lands (Terre australes et antarctiques francaises)



# French Southern and Antarctic Lands

- Least directly tied to Antarctica
- Previously administered from Madagascar, then Reunion Island, and now from Paris.
- Includes five groups of islands - including island groupings as far north as between the east coast of Africa and Madagascar.
  - Kerguelen Islands; St. Paul and Amsterdam Island Crozet Islands; Adelie Land - the French claim in Antarctica and; Scattered islands
- Summer residents: 300 military and research personnel - no permanent residents.
- First stamps were overprints of Madagascan stamps in 1954 with first stamps bearing FSAT issued in 1955.
- Total number of stamps issued > 600.



French Southern and  
Antarctic stamps honoring  
the  
International Geophysical  
Year, 1957





# Australian Antarctic Territory







# 1954 Expedition Cinderellas





# Australian Antarctic Territory

- Australian claim one of most extensive geographically.
- British claimed Victoria Land in 1841 - ceded to Australia in 1933.
- Also claim extensive economic zone - monitor seas south of Australia – whaling.
- Summer population 80-200.
- Have issued stamps since 1957.
- Approximate number of stamps issued 300.
- Valid in Australia and its territories.
- Least expensive to collect.





BY AIR MAIL  
PAR AVION

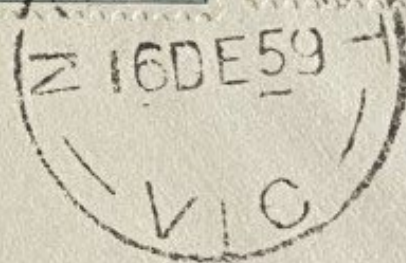
FIRST DAY COVER

AUSTRALIAN ANTARCTIC TERRITORY

(WILKES, DAVIS, MAWSON & MACQUARIE ISLAND)



ADDITIONAL VALUES OF SERIES



Mr. George Darbourn,  
Beecroft, Soldier's Rise,  
Wokingham, Berks., ENGLAND.



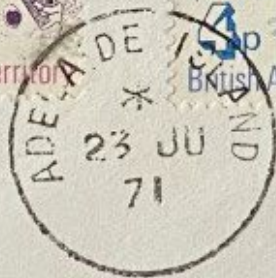
# British Antarctic Territory







British Antarctic Territory  
Antarctic Treaty 1961-1971  
Official First Day Cover



BRITISH ANTARCTIC SURVEY, PORT STANLEY, FALKLAND ISLANDS, SOUTH ATLANTIC

- Created in 1962 from former dependencies of the Falkland Islands: South Orkney Islands, South Shetland Islands, and Graham Island.
- Encompasses region south of 60 degrees S latitude and between 20- and 80-degrees W longitude - overlapping claims of both Chile and Argentina.
- Southern part named for Queen Elizabeth II in 2012 as part of her 60<sup>th</sup> Jubilee.
- Summer population estimated at 250.
- Falkland Islands Philatelic Bureau serves as administrative agent.
- First issue was in 1963.
- Stamps issued on First day covers are cancelled at the relevant research base and returned to Port Stanley for distribution.
- Stamps largely sold to collectors overseas.
- Total number stamps issues: >600
- Of the Antarctic territory stamps, these are the most expensive.



Official First Day Cover

BRITISH  
ANTARCTIC  
TERRITORY



SILVER JUBILEE



QUEEN ELIZABETH II



7 FEB 1977

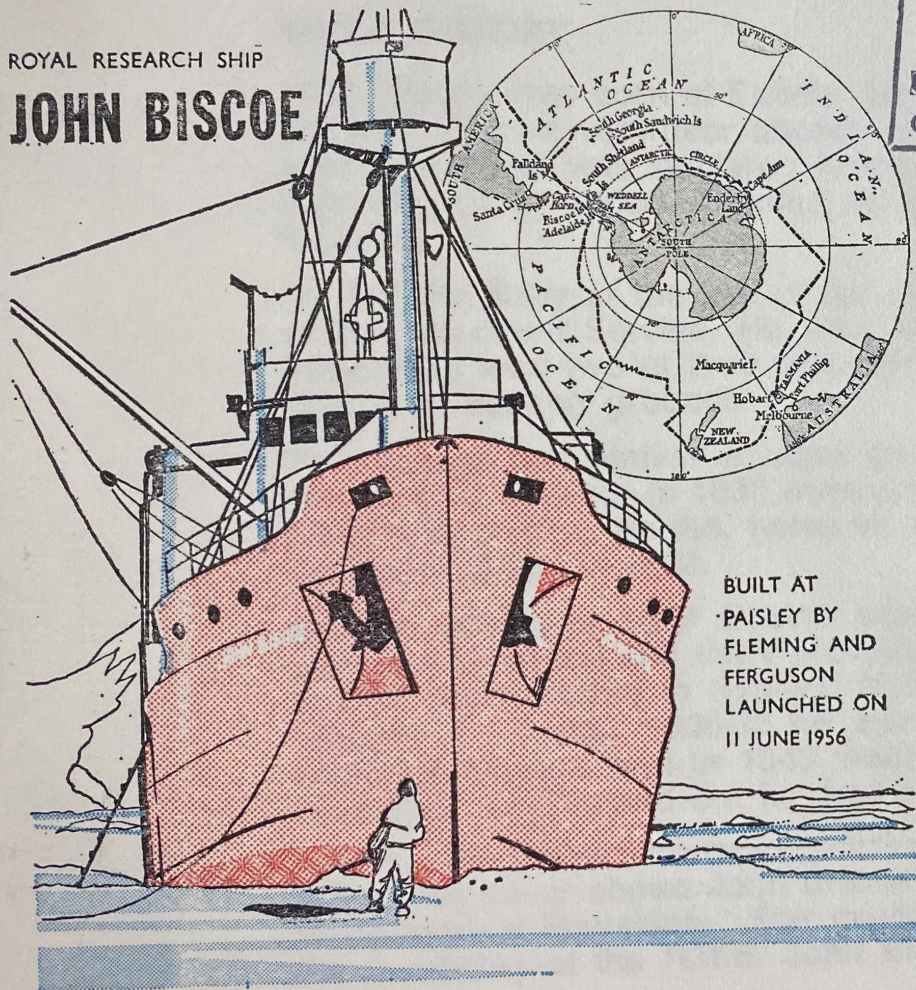
BRITISH ANTARCTIC



# Scottish Philatelic Congress 1976

ROYAL RESEARCH SHIP

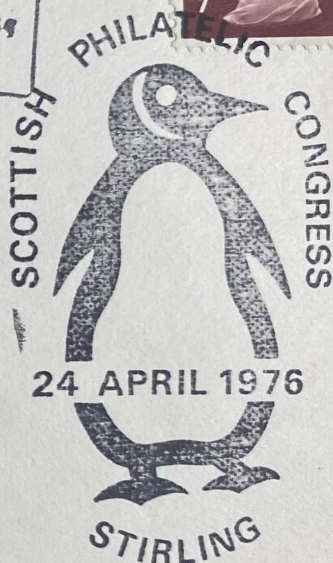
**JOHN BISCOE**



BUILT AT  
PAISLEY BY  
FLEMING AND  
FERGUSON  
LAUNCHED ON  
11 JUNE 1956

**R.R.S. "JOHN BISCOE"**  
**PORT STANLEY, F.I.**  
G.R.L. 1583-97 N.R.T. 615-19  
O.N. 185050 H.P. 1450

**ANTARCTIC  
SURVEY**



24 APRIL 1976

*Mr. A. Butler,  
45 Ashland House,  
Ashland Place,  
LONDON, W.1.*

**Paisley Philatelic Society**





New Zealand Issues

# New Zealand Issues



## Victoria Land

- Before leaving NZ for 1910 Terra Nova Expedition, Robert Falcon Scott appointed NZ Postmaster.
- 2 issued: ½ penny green King Edward VII & 1 penny red Dominion – only 2,400 ½ penny produced.
- Sold at a premium to raise money for the expedition
- 24,000 NZ penny Dominion stamps overprinted “Victoria Land”.
- 23,171 carried by Scott on the expedition.

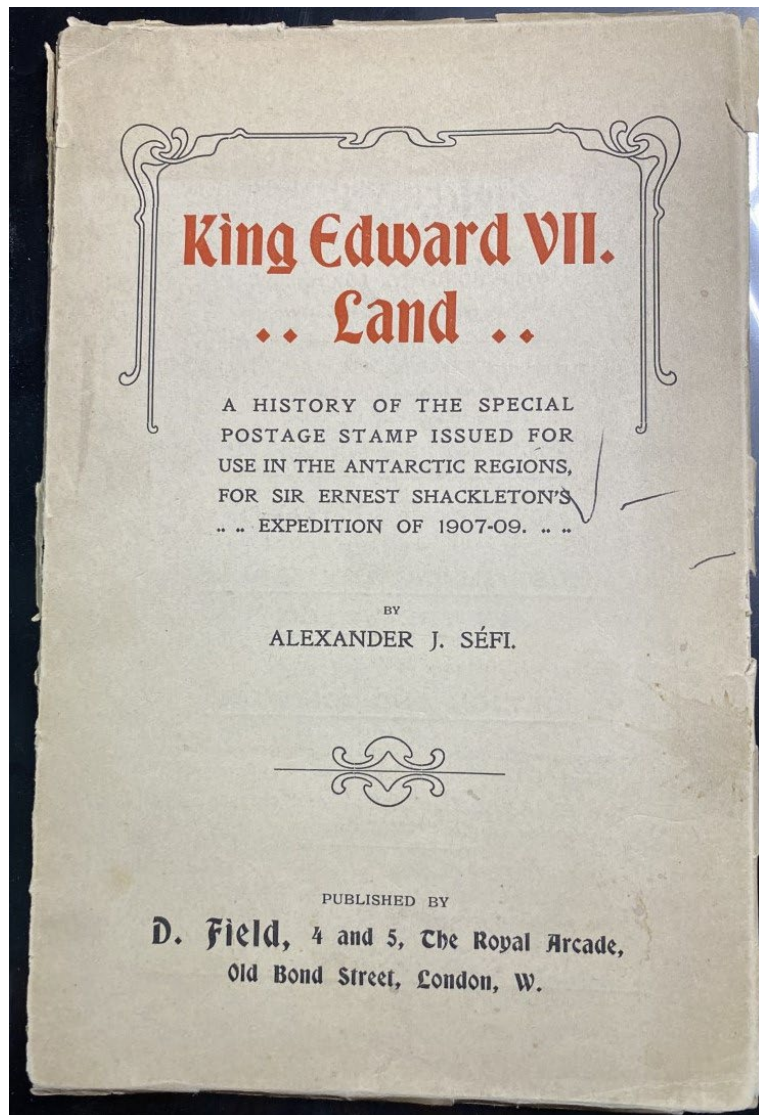


# New Zealand Issues



## King Edward VII Land

- Before 1908 British Antarctic Expedition Ernest Shackleton was appointed NZ postmaster and he provided 23,492 NZ penny universals with “King Edward VII Land” overprint for use on the 1907-09 expedition.
- Unable to reach King Edward VII land – but established McMurdo Sound base.
- In 1912 2,400 additional stamps overprinted - 1,940 carried on the later expedition.



A brief history of the expedition and of the stamp published in 1912. The book also contains interesting photographs of both subjects such as this one of an original sheet of stamps with Shackleton's signature at the bottom. Publisher was a philatelic dealer and in 1911 he purchased all remaining KEVII stamps from Shackleton.



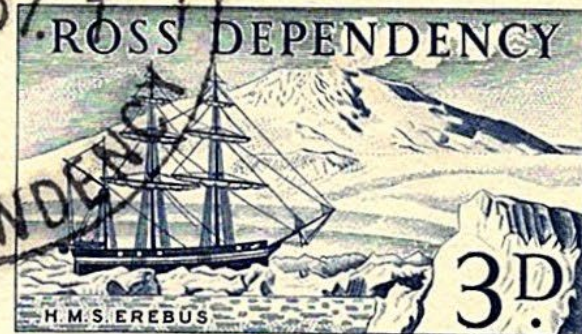
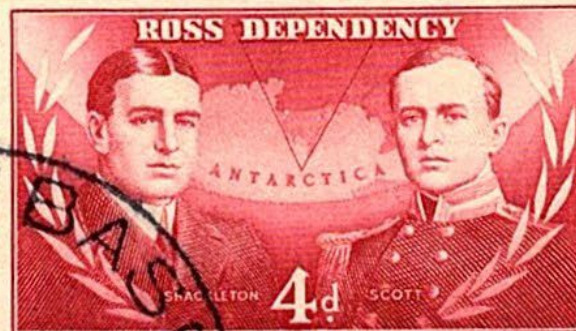
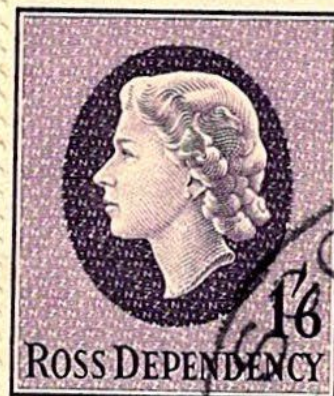
# Ross Dependency

- Dependency includes part of [Victoria Land](#), and most of the [Ross Ice Shelf](#). [Ross Island](#), [Balleny Islands](#) and the small [Scott Island](#) also form part of the Dependency, as does the ice-covered [Roosevelt Island](#).
- Christchurch is primary jumping off point for researchers in McMurdo Bay area.
- Began issuing stamps in 1957; then in 1967, 1972, & 1982
- Annual sets of 5-6 stamps since 1994.
- Total number stamps issued > 190 (including mini-sheets).
- Not valid for use in New Zealand, although issued through NZ Postal Service.
- Profits go to support research.
- US research primarily done here.



## Ross Dependency

This card was posted at Ross Island in Antarctica on the First Day of issue of the special Ross Dependency stamps issued by New Zealand for the 1956-7 New Zealand Expedition to Antarctica. Special Post Offices were established in the Ross Dependency for members of the Expedition and the stamps were valid for postage only from these offices.



SEVEN SEAS STAMPS  
Dubbo. N.S.W.  
Australia.



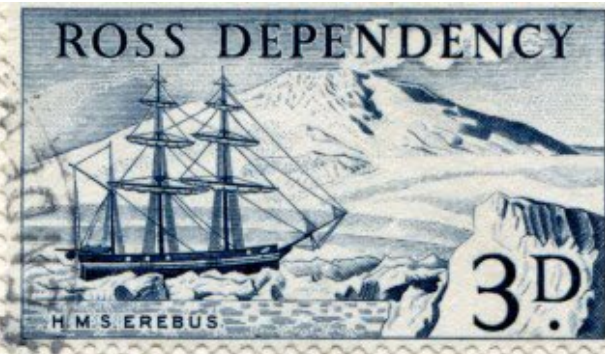
SCOTT BASE 1960-61

# Souvenir Cover

ANTARCTICA



THE HOME OF THE KING PENGUIN





N.Z. SUB-ANTARCTIC  
RESEARCH STATION



CAMPBELL ISLAND



H. Busher

John Reay  
63 Howick Rd  
Blenheim  
New Zealand



# CREATURES OF THE ANTARCTIC SEA FLOOR



ROSS DEPENDENCY 2016 OFFICIAL FIRST DAY COVER





MC MURDO STATION  
ANTARCTICA

*Mc Murdo station*



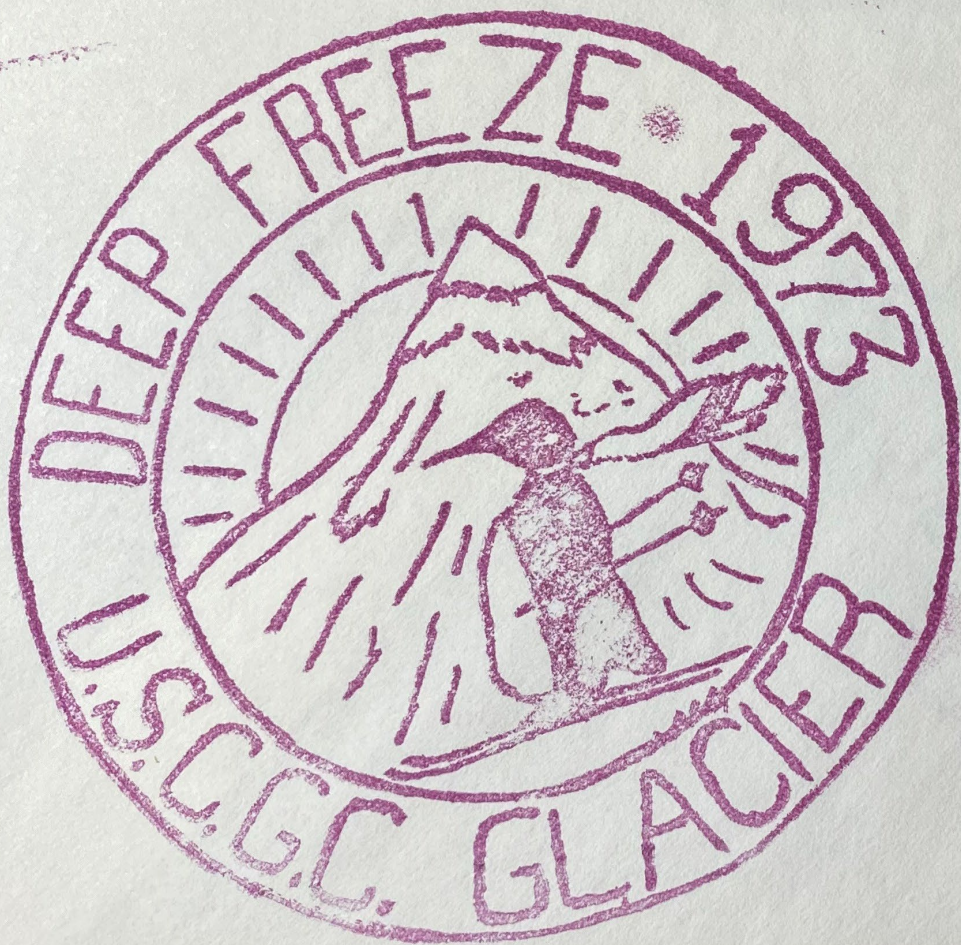
U.S. NAVY  
OPERATING  
DEEP FREEZE



EISENHOWER USA

*M. Newbold  
apt 3  
278 E. Novilla Pl.  
Covina  
California 91722*





EARL J. WILSON  
834 SHADYDALE AVE.  
LA PUENTE, CALIF.





USCS # 4728

ROBERT DORAN  
P. O. BOX 2  
STAR LAKE, N. Y. 13690





# My Most Expensive Antarctic Cover

The postcard I mailed to myself – but now cannot find in  
my “great” filing system.



# Antarctic Philatelic Associations

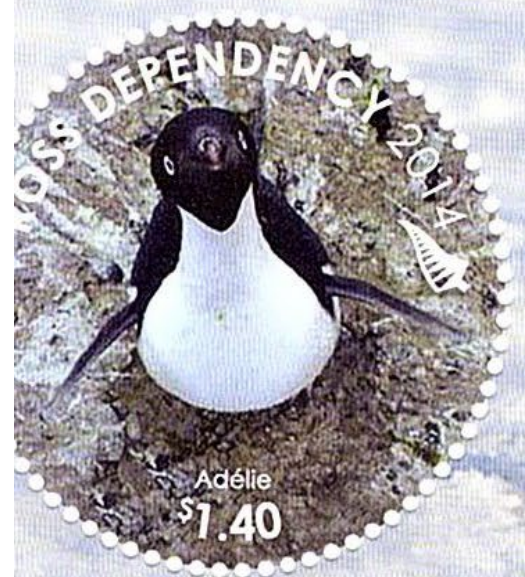
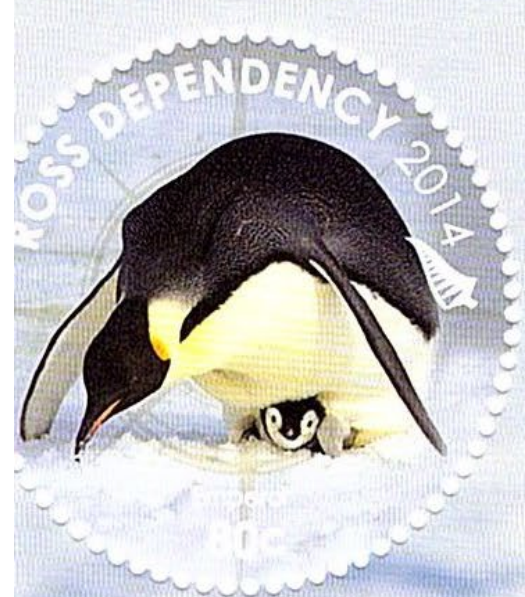
- **American Society of Polar Philatelists.** Secretary, Alan Warren, P. O. Box 39, Exton, PA 19341-0039, USA. E-mail: alanwar@att.net. Web: - <https://polarphilatelists.org/> The American Society of Polar Philatelists was founded in 1956 and has grown to become an international organization with approximately 300 members worldwide.
- **The Antarctic Society** – Philatelic Corner - <https://www.antarctican.org/> Founded in 1960.
- **Australian Society for Polar Philately.** <https://www.gleauty.com/AU/Sydney/198935890173656/Australian-Society-for-Polar-Philately> Formed in 1974.
- **Polar Postal History Society of Great Britain.** Trevor Cornford, Chairman, tiercey@yahoo.co.uk. Web: <https://www.polarpostalhistory.org.uk/>
- **Polarphilatelie e.V.** Dieter Querndt, Postfach 20-01-12, 99040 Erfurt, Germany (newsletter in German). <https://www.polarpostalhistory.org.uk/>
- **Sociedad Espanola de Filatelia Polar – SEFP.** Apartado de Correos 7, 43530 Alcanar (Tarragona), Spain (newsletter in Spanish) <https://fecafil.blogspot.com/2019/09/la-sociedd-espanola-de-filatelia-polar.html>
- **Union Française de Philatelie Polaire - SATA.** C/o Gerald Brandel, 17 route de Flanville, F 57645 Montoy - Flanville, France (newsletter in French). <https://www.ffap.net/Federation/association.php?ass=16>



# Thank You and References:

- Russell Harmon
- Antarctic Post Office, National Postal Museum <https://postalmuseum.si.edu/collections/object-spotlight/antarctic-post-office>
- Holland, Paul M., **FDR and the Byrd Antarctic Expedition II Stamps**. The United States Specialist. 95, 7 (July 2024): 311-328.
- Sefi, Alexander (1912) **King Edward VII ...Land**, D. Field: London.
- Stewart, Steve, (2016), **Polar Philately: Postal Service in the World's Coldest Places**, Presentation to Houston Philatelic Society. <https://www.slideshare.net/SteveStewart5/polar-philately-postal-service-in-the-worlds-coldest-places>
- Thompson, Jason Ryan (2017), **Polar Theatre: The Evolution of Acts of Sovereignty in the Norwegian Antarctic**, A Thesis Presented to the Global 30 Program at The School of Social and International Studies, The University of Tsukuba. [antarctica.earth/ThompsonPolarTheatre.pdf](http://antarctica.earth/ThompsonPolarTheatre.pdf)
- Vogel, Hans, **Essence of Polar Philately** (2008), American Society of Polar Philatelists,





THE PENGUINS OF ANTARCTICA 

